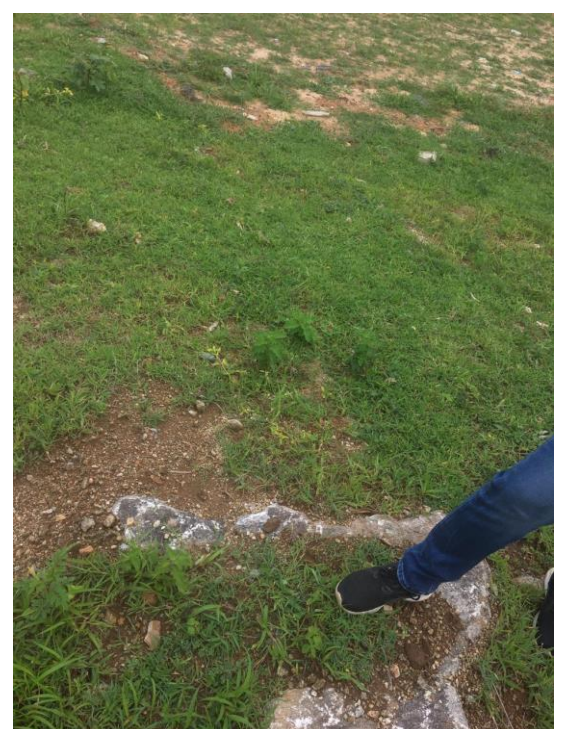


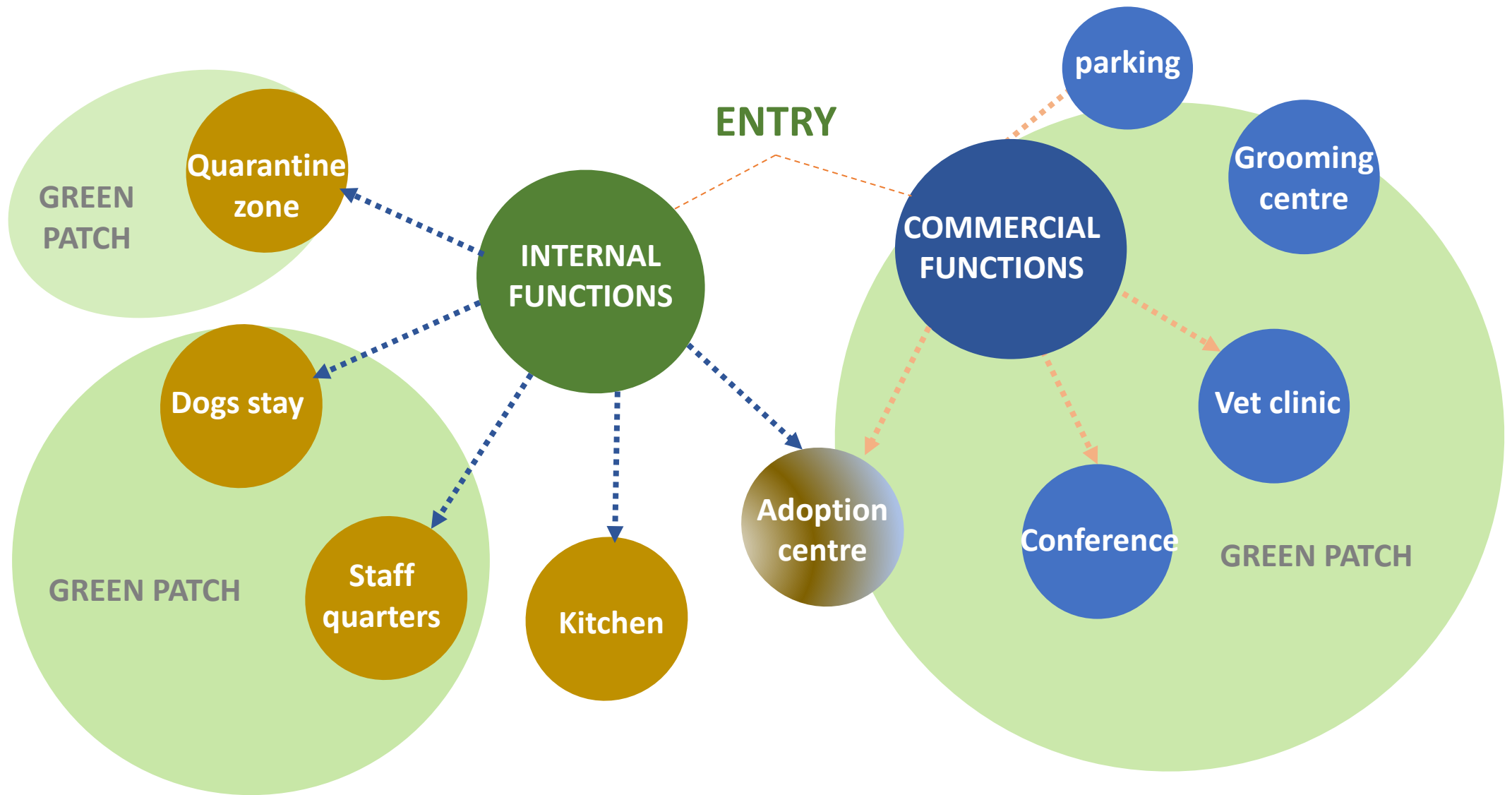


PROPOSED DOG SHELTER HOME FOR

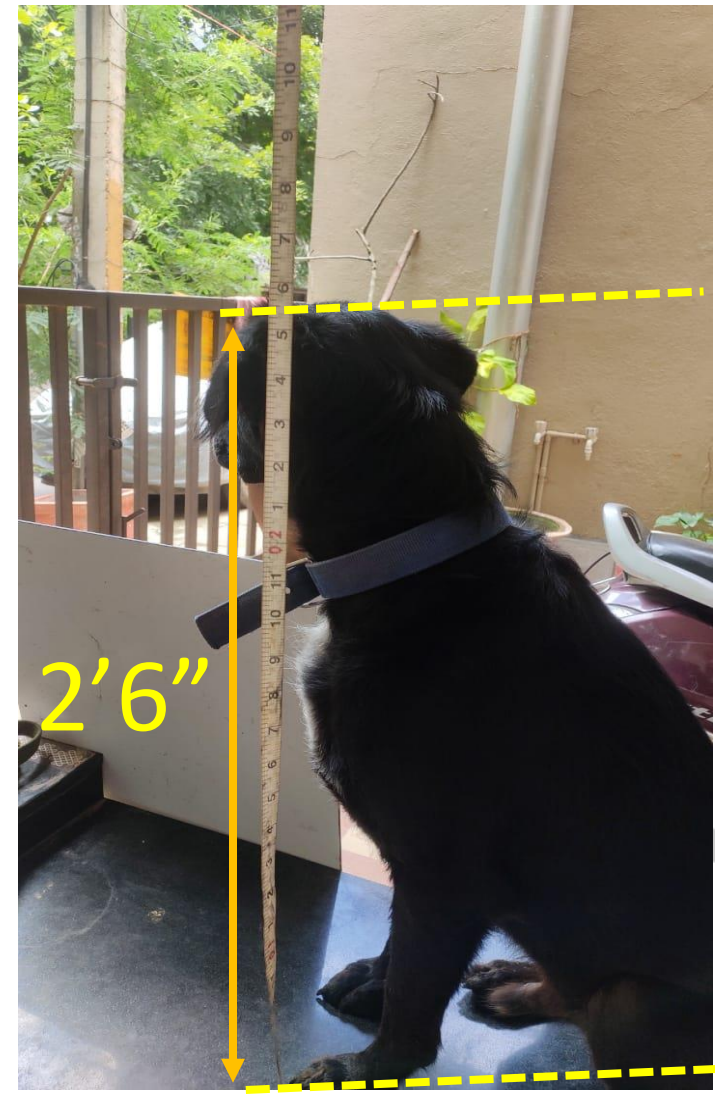
# MYLOS RESCUE



# SITE IMAGES



FLOW CHART FOR MYLO' S RESCUE & ADOPTION CENTRE



**BUDDY** AS A CASE STUDY ,

We inferred that **3' x 4' x 4'** is habitable space for a healthy Indie dog !





**Small**

24"L x 18"W x 21"H



**Medium**

30"L x 21"W x 24"H



**Large**

36"L x 24"W x 27"H



**X-Large**

42"L x 28"W x 31"H

This crate is perfect for giant dog breeds.



**SMALL**



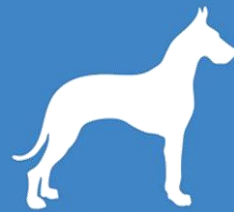
**MEDIUM**



**LARGE**



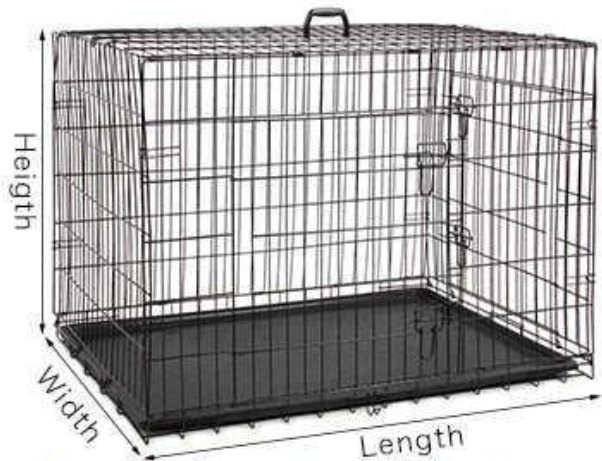
**X-LARGE**



**GIANT**

**UNDERSTANDING  
VARIOUS MARKET  
STANDARDS**

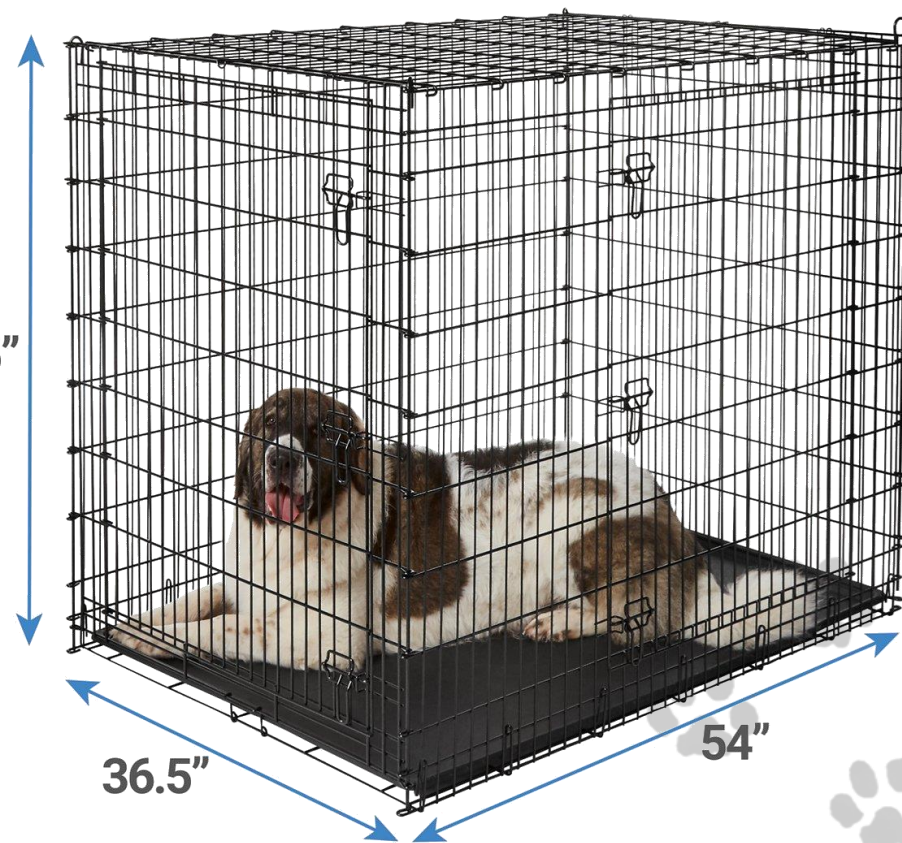




Please allowed 1-3cm error caused by hands measurement. Caution: This particular outfit does not cater to USA sizes, plz measure accordingly before checking out.

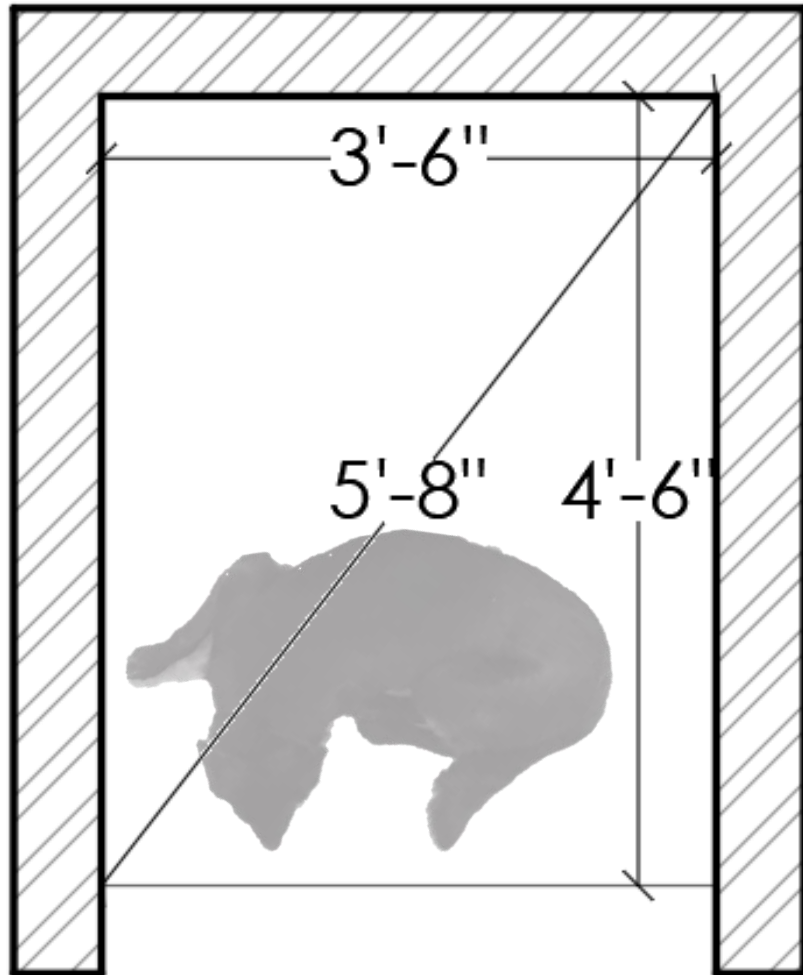
SIZE	Length		Width		Height	
	cm	inch	cm	inch	cm	inch
S	60	23.6	46	18.1	51	20.1
M	76	29.9	53	20.9	57	22.4
L	91	35.8	61	24.0	67	26.4
XL	106	41.7	71	28.0	76	29.9
2XL	122	48.0	77	30.3	82	32.3

44.75"

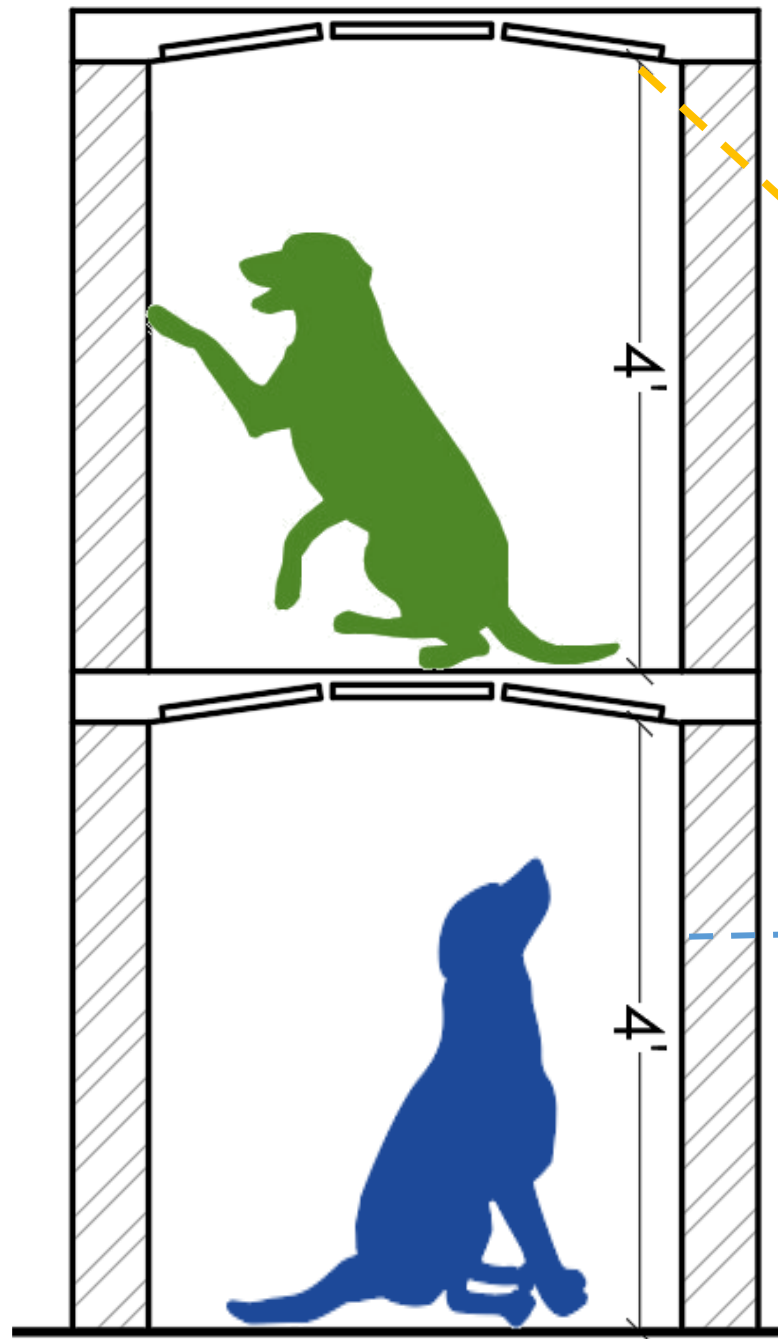


UNDERSTANDING  
INTERNATIONAL  
STANDARDS

# CONCLUSION:



PLAN

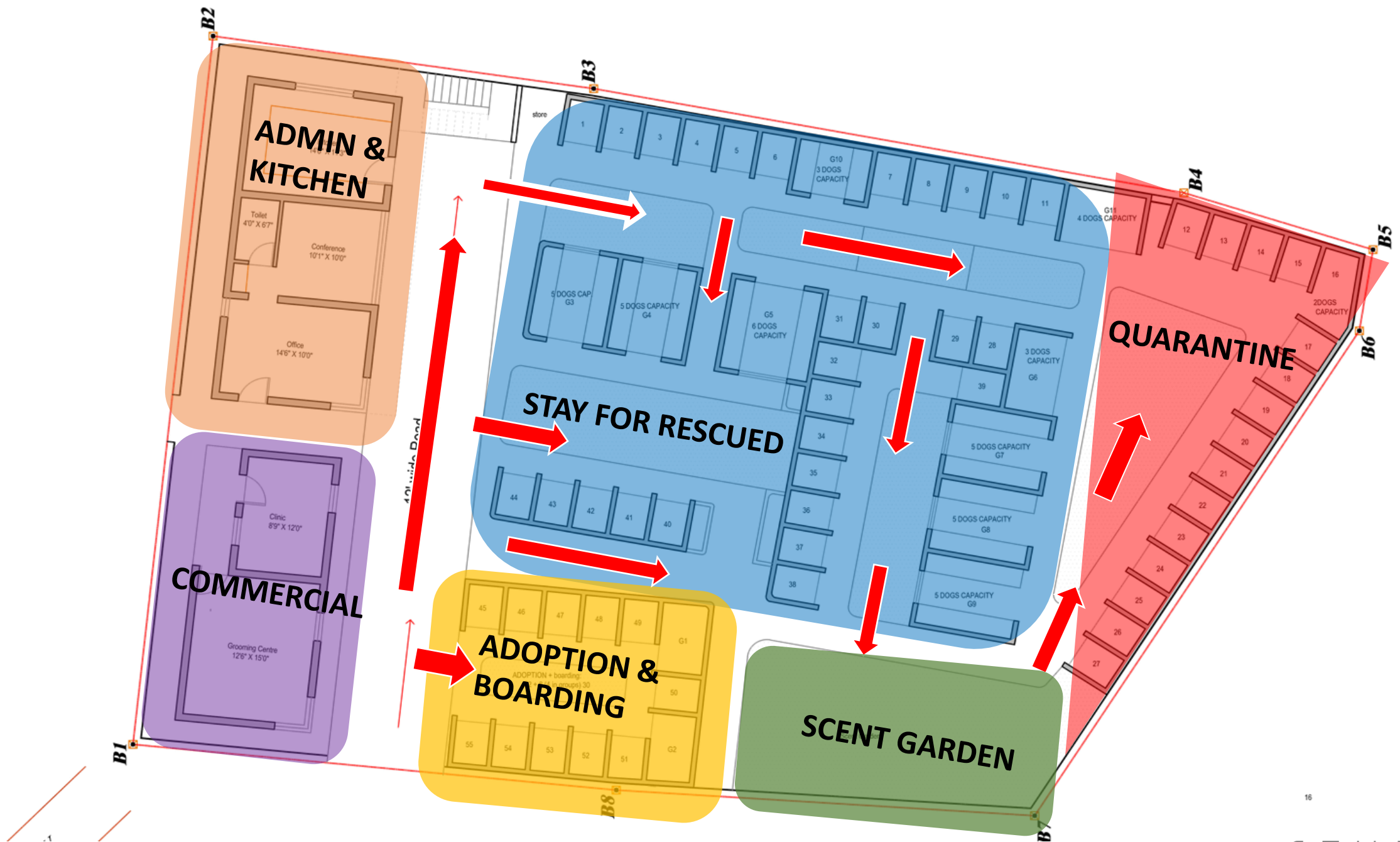


ARCH PANEL ROOF



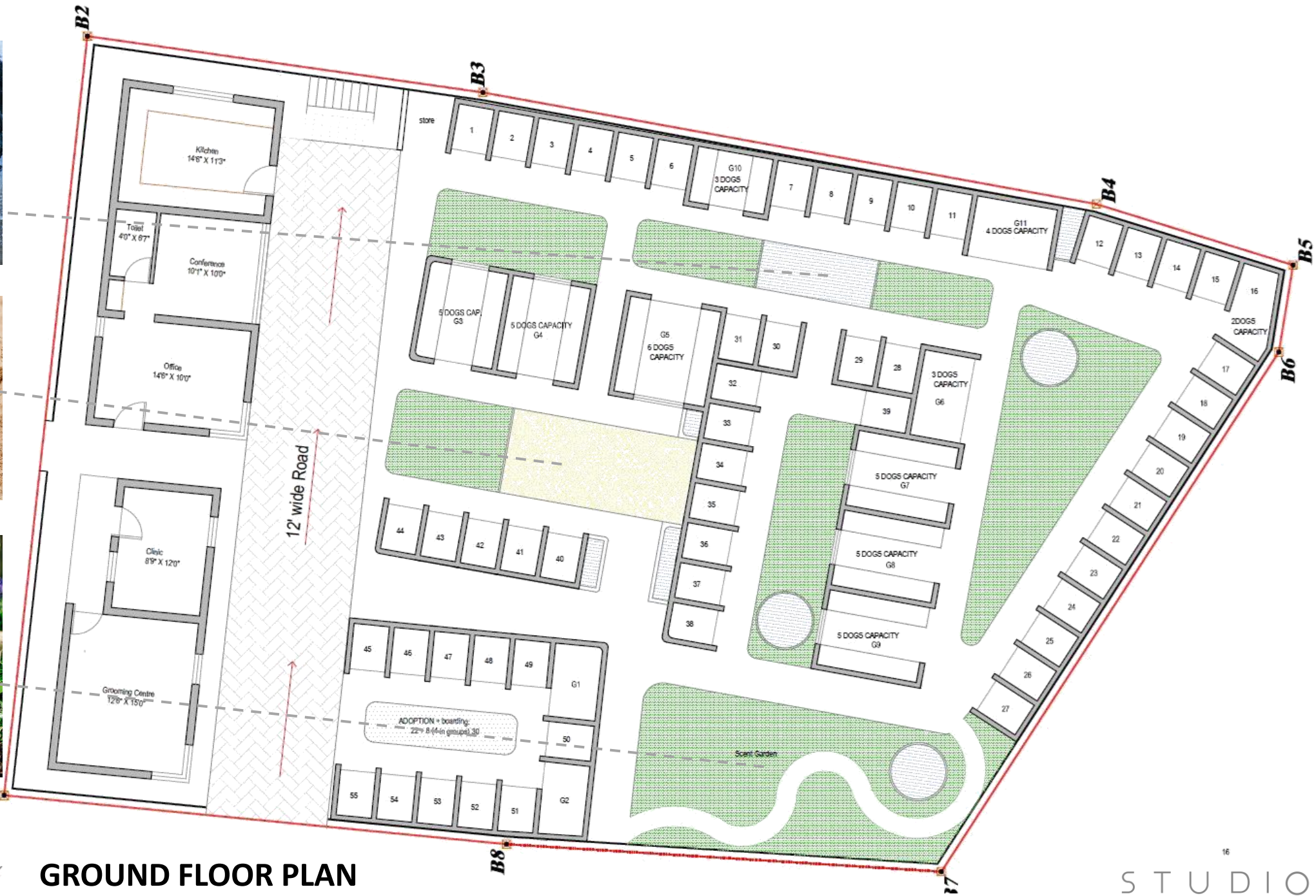
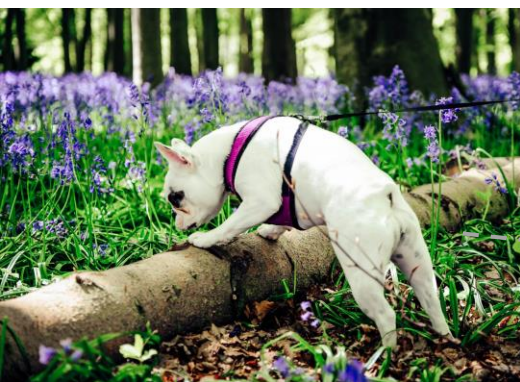
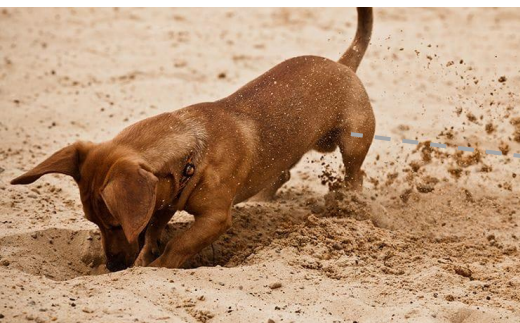
6" MUD BLOCK WALLS



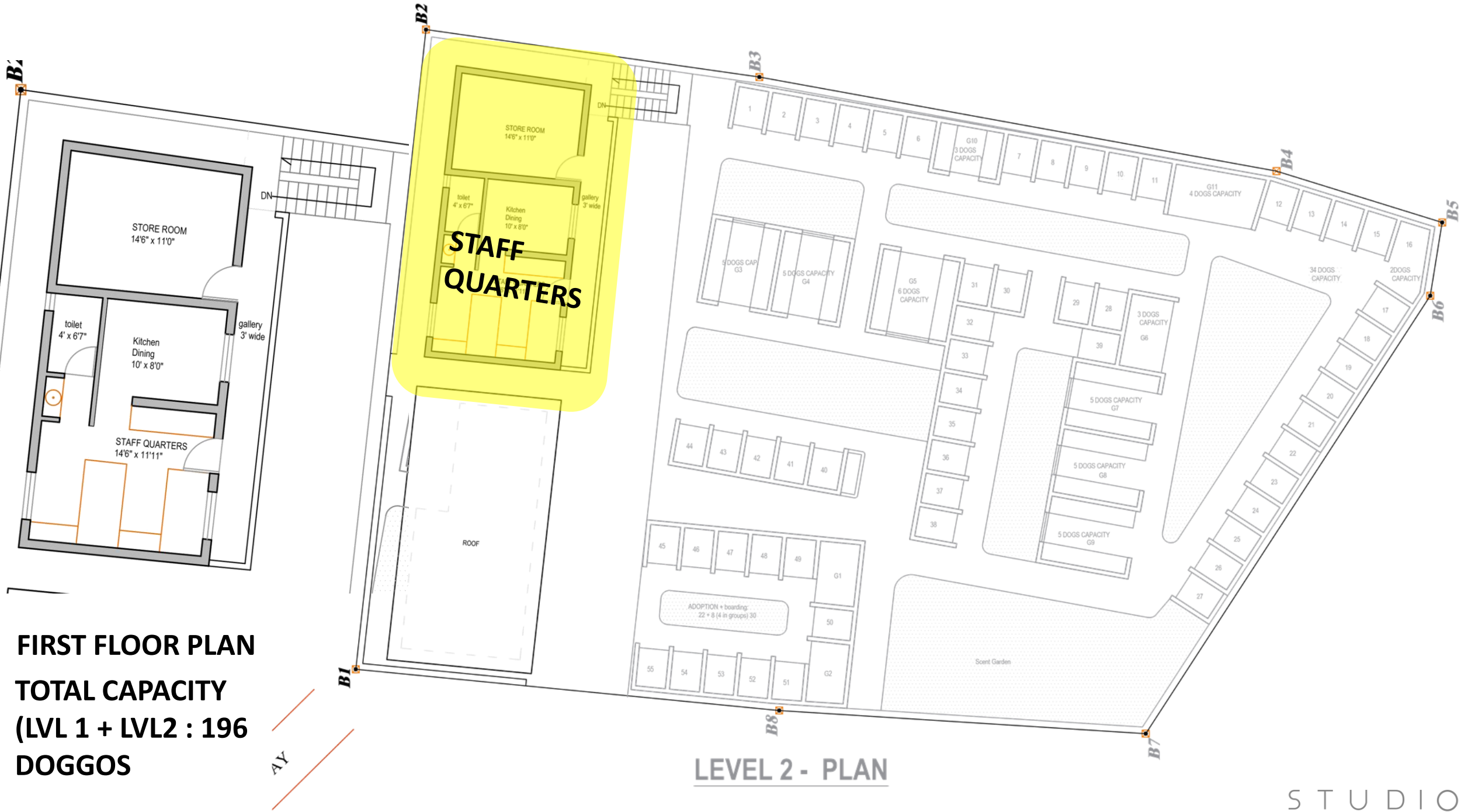


**FUNCTIONAL FLOW**





**GROUND FLOOR PLAN**



**FIRST FLOOR PLAN**  
**TOTAL CAPACITY**  
**(LVL 1 + LVL2 : 196**  
**DOGGOS**

**LEVEL 2 - PLAN**

# GROUND FLOOR PLAN

TOTAL CAPACITY  
(LVL 1 + LVL2 : 226  
DOGGOS

